

B.Sc (3 YEAR DEGREE) 4th SEMESTER (HONOURS) PRACTICAL
EXAMINATION (BLENDED MODE), 2021, K.U

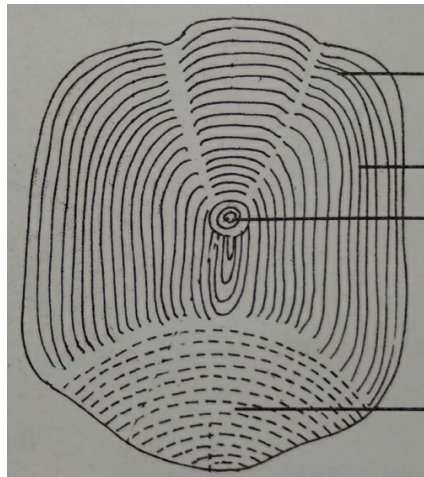
SUBJECT: ZOOLOGY

PAPER: HGE-P-02

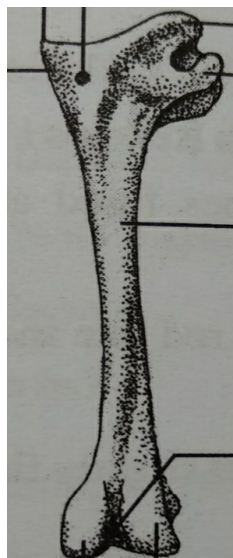
FULL MARKS: 20

TIME: 2HOURS

Q1. Identify the following study materials with characters. 3×3=9



(A)



(B)



(C)

Q2. Write down the equipment and chemicals name along with procedure of dissolved oxygen estimation. 3+3=6

Q3. Viva (MCQ type) 1×5=5

- i) Pituitary gland found in – a) Small intestine / b) Brain / c) Lung.
- ii) Apiculture is related with – a) Moth / b) Butterfly / c) Bee.
- iii) Venus heart found in – a) Fish / b) Snake / c) Amphibian.
- iv) Energy flow through ecosystem is – a) Unidirectional / b) Multidirectional / c) None.
- v) Plastron found in – a) Shark / b) Turtle / c) Mammals.

